

# Knest Floor Plans, Process & Price Guide



**knest**

## Premium Modular Homes

Knest is a proud Australian company that design and deliver high quality modular homes at affordable prices.

HOMES FOR EVERYONE, EVERYWHERE.



# Content

03 Floor Plans

64 Process

67 Timeframe & Payment Outline

68 Price list & Install Price

67 Installation Inclusions

68 Standard Inclusions

70 Additional Options

71 Notes



# Floor Plans



[sales@knest.com.au](mailto:sales@knest.com.au)  
[www.knest.com.au](http://www.knest.com.au)

# 1 Bedroom Model Designs



---

|            |                                  |
|------------|----------------------------------|
| Banksia    | 6 X 2.4m   15m2 approx.          |
| Eucalyptus | 12 X 2.4m   30m2 approx.         |
| Pandani    | 3.4 X 6m   23.3m2 approx.        |
| Huon       | 12.2 X 3.5m   42.7m2 approx.     |
| Lily Pilly | 8.6 X 3.2m   32.9m2 approx.      |
| Blackwood  | 6.0 x 2.4 * 2   29.54 m2 approx. |





# Banksia

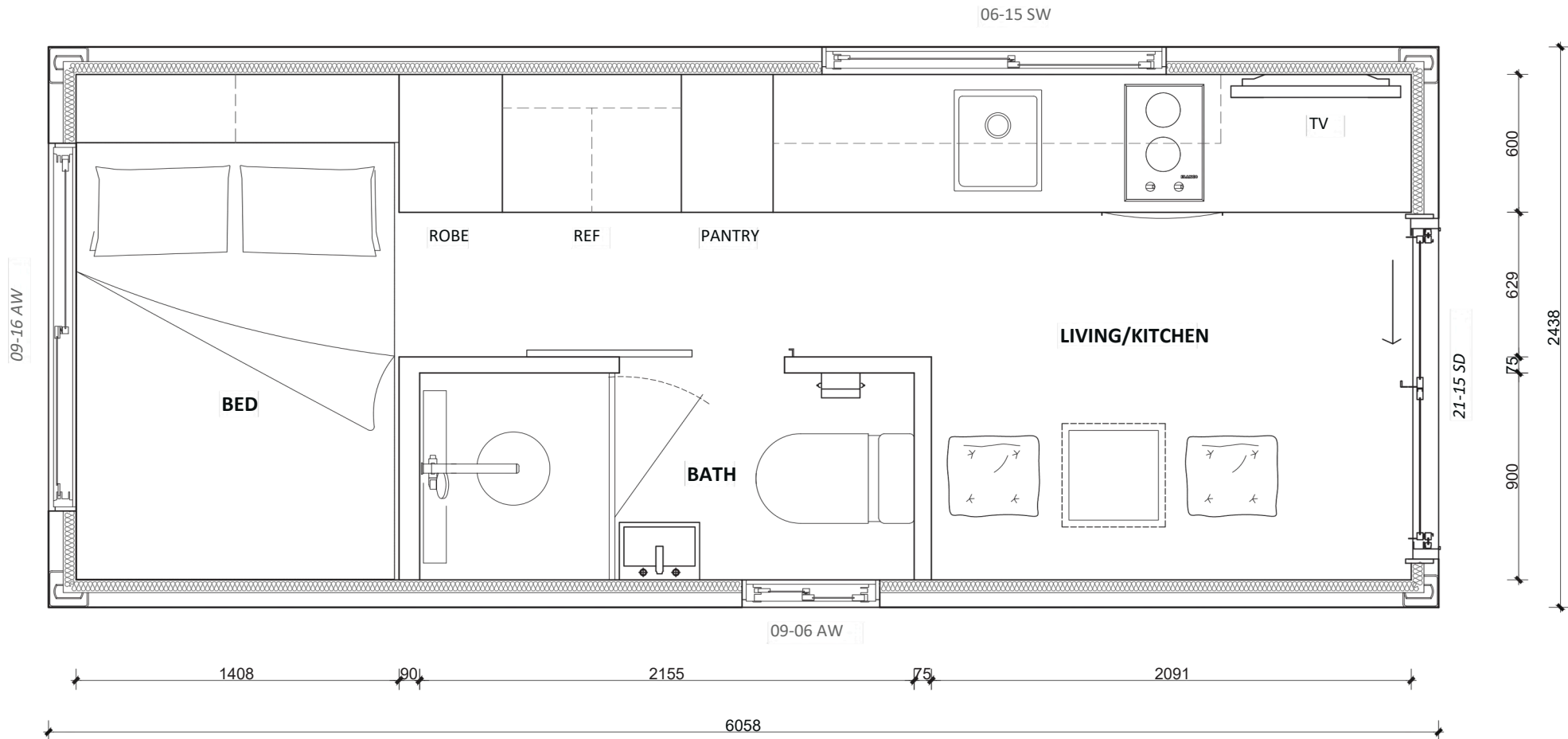
1 1

6.06 (L) x 2.44 (W) | 14.79m<sup>2</sup>

The Banksia is a streamlined 1 bedroom modular home designed for those who want a functional, low-maintenance living solution. At just 15m<sup>2</sup> (2.4m x 6m), it's the smallest in the Knest range, making it ideal as a studio, guest pod, or backyard retreat. With quality construction and full compliance, the Banksia makes that even the smallest of spaces feel like home.

# Banksia

Bedroom: 1  
 Bathrooms: 1  
 Living Room: 1  
 Dimensions: 6.06 (L) x 2.44 (W)  
 Area: 14.79 m<sup>2</sup>



## Get In Touch Now

T +61 420 694 788  
 E [sales@knest.com.au](mailto:sales@knest.com.au) | W [www.knest.com.au](http://www.knest.com.au)  
 A 3/14 Cessna Way, Cambridge TAS 7170  
 f @knest.modular

*"All photos and illustrations are representative and are to be used as a guide only. Floorplans and specifications may be varied by Knest without notice, dimensions and measurements are an approximate. The inclusion of furniture, floor coverings, wall paper, curtains, light fittings, lawns, fences, driveways, footpaths, patios and pergolas are intended merely as a guide and are not included in the price unless otherwise listed independently. All designs are the property of Knest and must not be used, reproduced, copied or varied, wholly or in part without written permission from an authorised Knest representative."*



# Banksia.

Interior  
Sample.



*"All photos and illustrations are representative and are to be used as a guide only. Floorplans and specifications may be varied by Knest without notice, dimensions and measurements are an approximate. The inclusion of furniture, floor coverings, wall paper, curtains, light fittings, lawns, fences, driveways, footpaths, patios and pergolas are intended merely as a guide and are not included in the price unless otherwise listed independently. All designs are the property of Knest and must not be used, reproduced, copied or varied, wholly or in part without written permission from an authorised Knest representative."*



# Eucalyptus

 1  1

12.19 (L) x 2.44 (W) | 29.74 m<sup>2</sup>

One of the larger 1 bedroom modules is the Eucalyptus offering a comfortable compact living style. It can be upgraded to allow kitchen cabinetry into the living room to provide seating or an external deck for outdoor entertainment. Ideal for a granny flat in your backyard.



# Eucalyptus

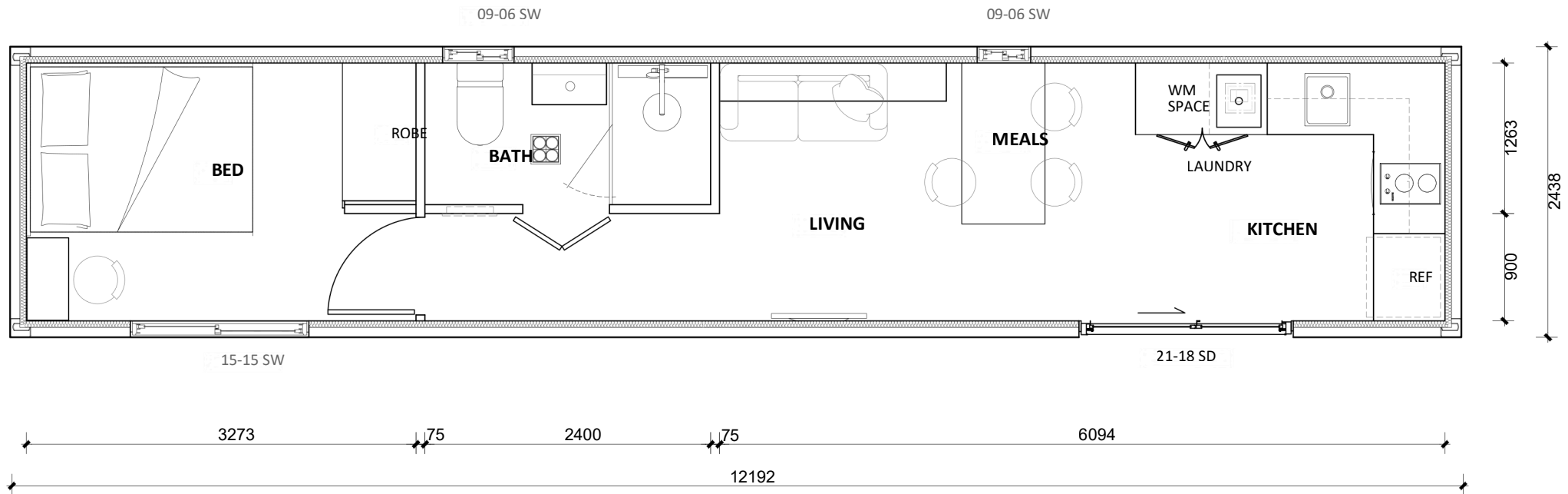
Bedroom: 1

Bathrooms: 1

Living Room: 1

Dimensions: 12.19m (L) x 2.44m (W)

Area: 29.74 m<sup>2</sup>



## Get In Touch Now

T +61 420 694 788

E sales@knest.com.au | W www.knest.com.au

A 3/14 Cessna Way, Cambridge TAS 7170

f @knest.modular

*"All photos and illustrations are representative and are to be used as a guide only. Floorplans and specifications may be varied by Knest without notice, dimensions and measurements are an approximate. The inclusion of furniture, floor coverings, wall paper, curtains, light fittings, lawns, fences, driveways, footpaths, patios and pergolas are intended merely as a guide and are not included in the price unless otherwise listed independently. All designs are the property of Knest and must not be used, reproduced, copied or varied, wholly or in part without written permission from an authorised Knest representative."*



# Eucalyptus.

Interior  
Sample.



*"All photos and illustrations are representative and are to be used as a guide only. Floorplans and specifications may be varied by Knest without notice, dimensions and measurements are an approximate. The inclusion of furniture, floor coverings, wall paper, curtains, light fittings, lawns, fences, driveways, footpaths, patios and pergolas are intended merely as a guide and are not included in the price unless otherwise listed independently. All designs are the property of Knest and must not be used, reproduced, copied or varied, wholly or in part without written permission from an authorised Knest representative."*



# Pandani



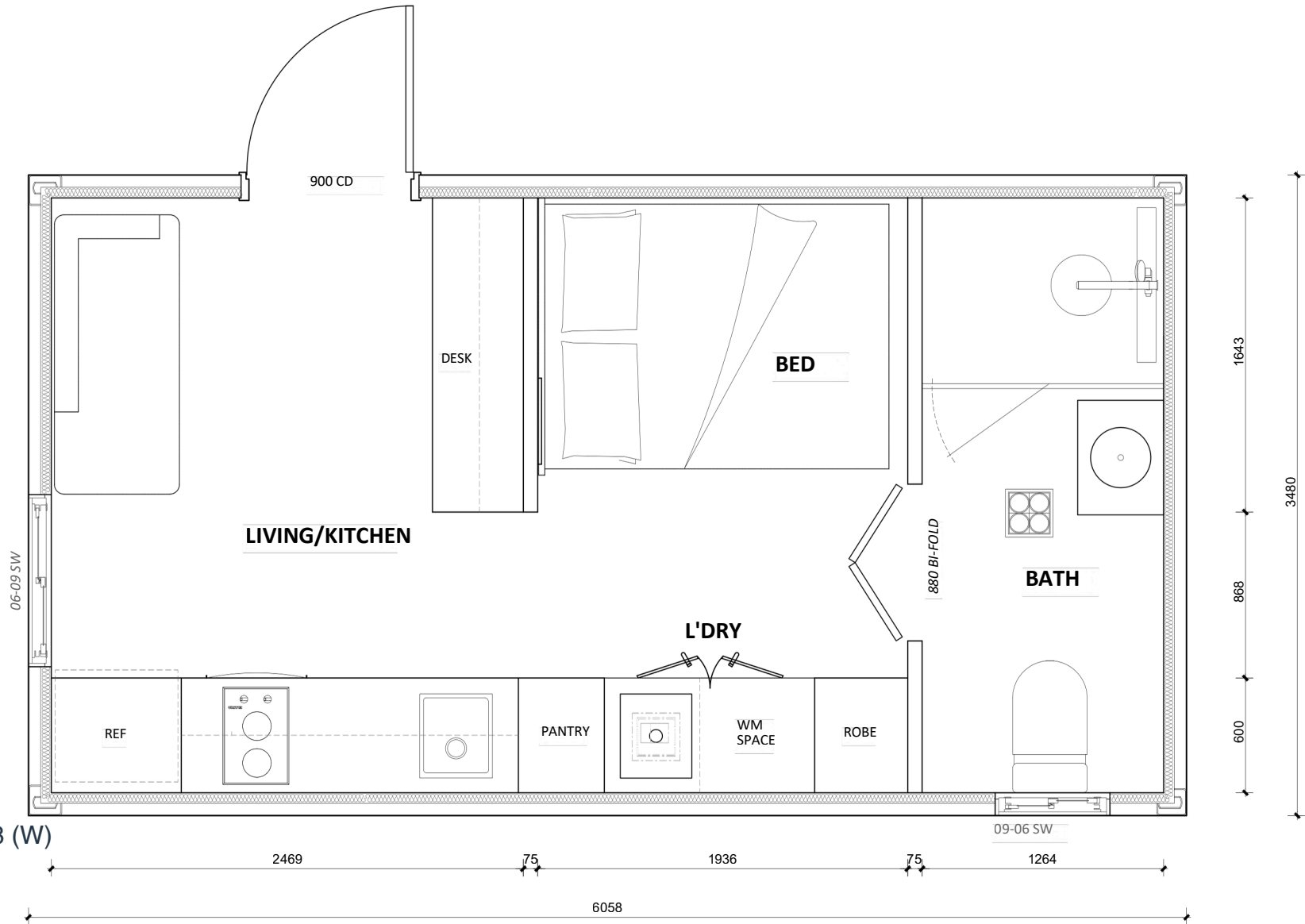
6.06 (L) x 3.48 (W) | 21.10 m<sup>2</sup>

The Pandani is a thoughtfully designed 1 bedroom modular home that makes the most of its 23.3m<sup>2</sup> footprint (3.35m x 6.06m). Perfect as a guest suite, studio, or backyard retreat, it balances simplicity with modern comfort. With quality finishes, full compliance, and smart design, the Pandani delivers an affordable way to add value and livability to any property.



# Pandani

Bedroom: 1  
 Bathrooms: 1  
 Living Room: 1  
 Dimensions: 6.06 (L) x 3.48 (W)  
 Area: 21.10 m<sup>2</sup>



## Get In Touch Now

T +61 420 694 788  
 E sales@knest.com.au | W www.knest.com.au  
 A 3/14 Cessna Way, Cambridge TAS 7170  
 f @knest.modular

"All photos and illustrations are representative and are to be used as a guide only. Floorplans and specifications may be varied by Knest without notice, dimensions and measurements are an approximate. The inclusion of furniture, floor coverings, wall paper, curtains, light fittings, lawns, fences, driveways, footpaths, patios and pergolas are intended merely as a guide and are not included in the price unless otherwise listed independently. All designs are the property of Knest and must not be used, reproduced, copied or varied, wholly or in part without written permission from an authorised Knest representative."



# Pandani.



Interior  
Sample.



*"All photos and illustrations are representative and are to be used as a guide only. Floorplans and specifications may be varied by Knest without notice, dimensions and measurements are an approximate. The inclusion of furniture, floor coverings, wall paper, curtains, light fittings, lawns, fences, driveways, footpaths, patios and pergolas are intended merely as a guide and are not included in the price unless otherwise listed independently. All designs are the property of Knest and must not be used, reproduced, copied or varied, wholly or in part without written permission from an authorised Knest representative."*



# Huon

 1 + 1 Bunk  1

12.19 (L) x 3.48 (W) | 42.42 m<sup>2</sup>

The Huon is a smart 1 bedroom + bunk room, 1 bathroom modular home, perfectly designed for small families, guests, or as a holiday retreat. At 42.7m<sup>2</sup> (12.2m x 3.5m), it makes the most of every metre, combining functionality with comfort in a compact footprint. With thoughtful design and quality finishes, the Huon proves that great things really do come in small packages.



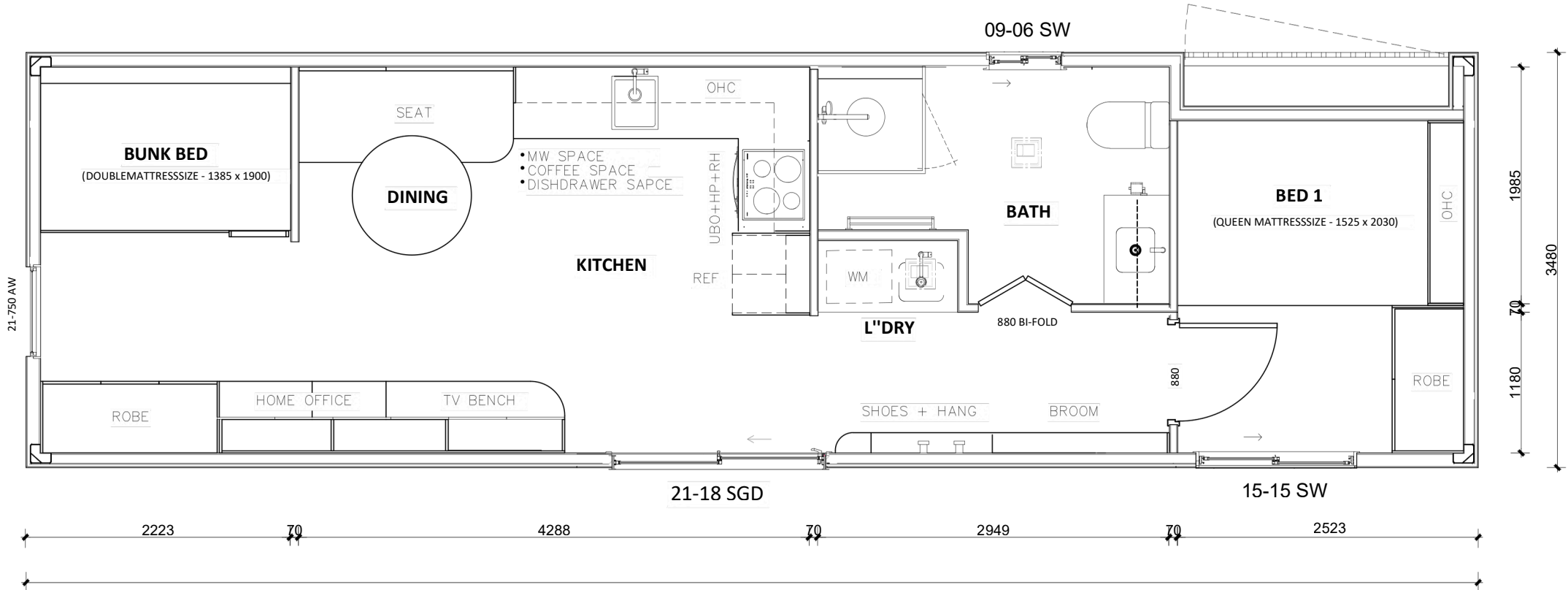
# Huon

Bedroom: 1 + 1 bunk

Bathrooms: 1

Dimensions: 12.19 (L) x 3.48 (W)

Area: 42.42 m<sup>2</sup>



## Get In Touch Now

T +61 420 694 788

E sales@knest.com.au | W www.knest.com.au

A 3/14 Cessna Way, Cambridge TAS 7170

f @knest.modular

"All photos and illustrations are representative and are to be used as a guide only. Floorplans and specifications may be varied by Knest without notice, dimensions and measurements are an approximate. The inclusion of furniture, floor coverings, wall paper, curtains, light fittings, lawns, fences, driveways, footpaths, patios and pergolas are intended merely as a guide and are not included in the price unless otherwise listed independently. All designs are the property of Knest and must not be used, reproduced, copied or varied, wholly or in part without written permission from an authorised Knest representative."



# Huon.

Interior  
Sample.



"All photos and illustrations are representative and are to be used as a guide only. Floorplans and specifications may be varied by Knest without notice, dimensions and measurements are an approximate. The inclusion of furniture, floor coverings, wall paper, curtains, light fittings, lawns, fences, driveways, footpaths, patios and pergolas are intended merely as a guide and are not included in the price unless otherwise listed independently. All designs are the property of Knest and must not be used, reproduced, copied or varied, wholly or in part without written permission from an authorised Knest representative."



# Lilly Pilly

1 1

9.40 (L) x 3.48 (W) | 32.71 m<sup>2</sup>

The Lilly Pilly is a clever 1 bedroom, 1 bathroom modular home designed for simple, stress-free living. At 32.9m<sup>2</sup> (3.2m x 8.6m), it offers everything you need in a streamlined footprint, making it perfect as a granny flat, guest suite, or independent retreat. With high quality finishes and full building regulation compliance, the Lilly Pilly delivers modern living spaces.

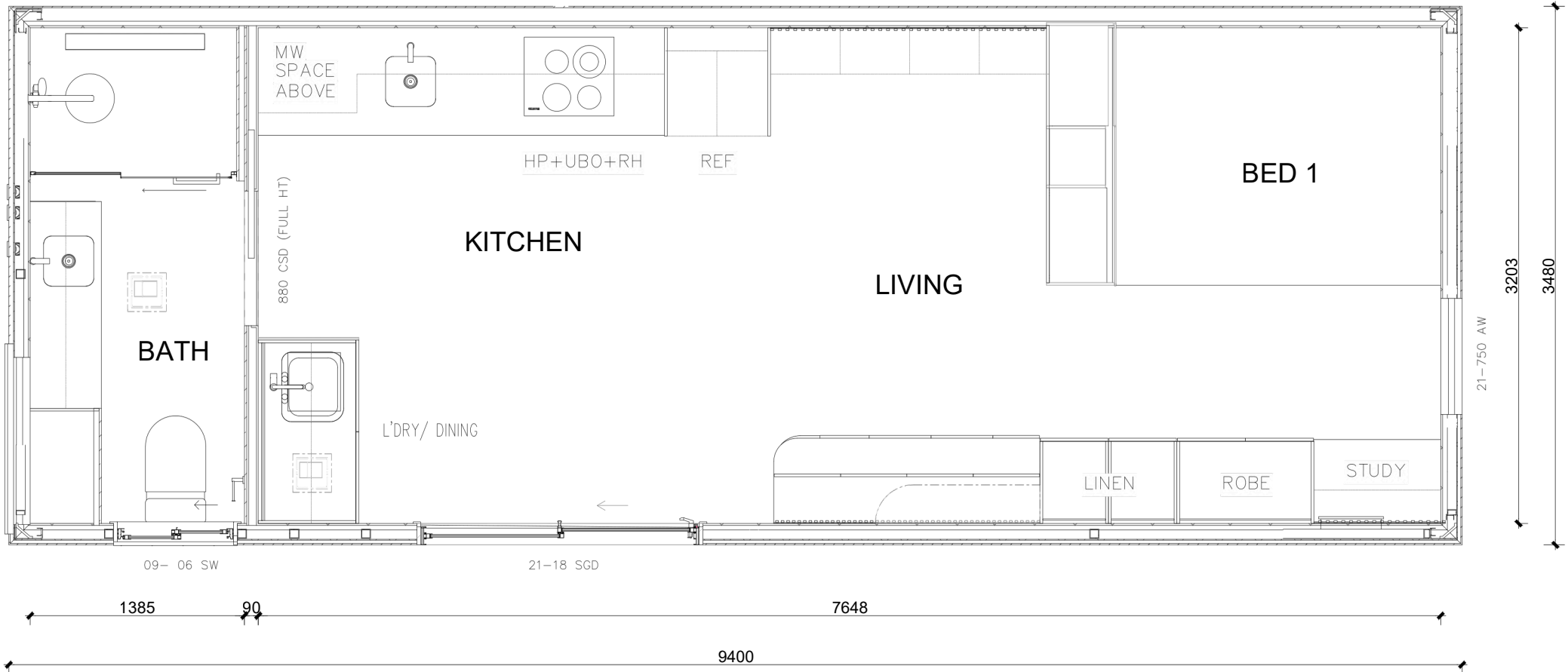
# Lilly Pilly

Bedroom: 1

Bathrooms: 1

Dimensions: 9.40 (L) x 3.48 (W)

Area: 32.71 m<sup>2</sup>



## Get In Touch Now

T +61 420 694 788

E sales@knest.com.au | W www.knest.com.au

A 3/14 Cessna Way, Cambridge TAS 7170

f @knest.modular

*"All photos and illustrations are representative and are to be used as a guide only. Floorplans and specifications may be varied by Knest without notice, dimensions and measurements are an approximate. The inclusion of furniture, floor coverings, wall paper, curtains, light fittings, lawns, fences, driveways, footpaths, patios and pergolas are intended merely as a guide and are not included in the price unless otherwise listed independently. All designs are the property of Knest and must not be used, reproduced, copied or varied, wholly or in part without written permission from an authorised Knest representative."*



# Lilly Pilly.

Interior  
Sample.



*"All photos and illustrations are representative and are to be used as a guide only. Floorplans and specifications may be varied by Knest without notice, dimensions and measurements are an approximate. The inclusion of furniture, floor coverings, wall paper, curtains, light fittings, lawns, fences, driveways, footpaths, patios and pergolas are intended merely as a guide and are not included in the price unless otherwise listed independently. All designs are the property of Knest and must not be used, reproduced, copied or varied, wholly or in part without written permission from an authorised Knest representative."*

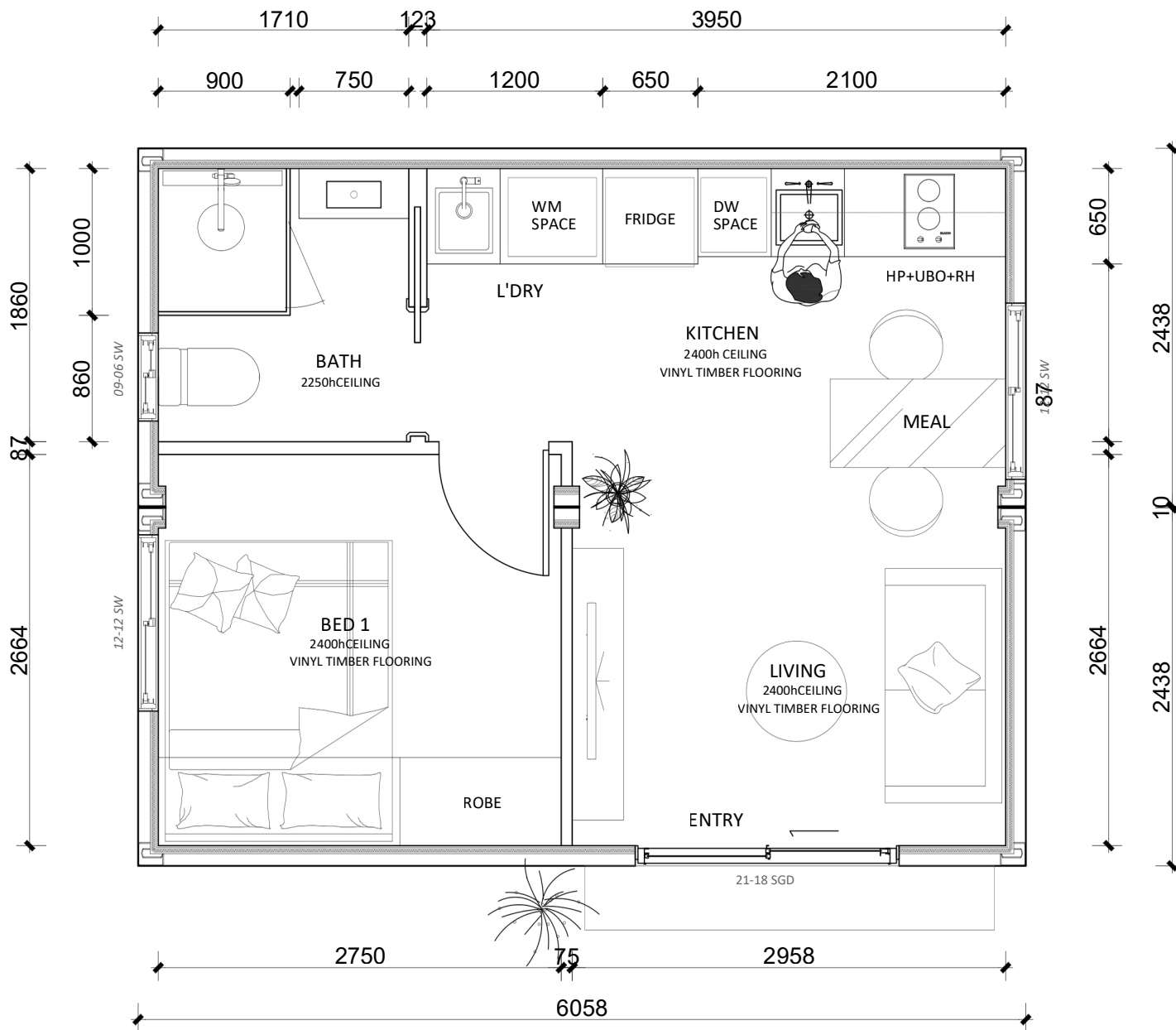


# Blackwood



6.01 (L) x 2.44 (W) \* 2 pods | 29.54 m<sup>2</sup>

The Blackwood is a smart 1 bedroom, 1 bathroom modular home designed for compact, functional living. Made up of two connected pods and spanning 29.54 m<sup>2</sup>, it delivers a well-planned layout that maximises space without compromising comfort. With a practical footprint and quality finishes throughout, the Blackwood is ideal as a secondary dwelling, guest accommodation, or private retreat, built to meet full building compliance standards.



# Blackwood

Bedroom: 1  
 Bathrooms: 1  
 Dimensions: 6.01 (L) x 2.44 (W) \* 2 pods  
 Area: 29.54 m<sup>2</sup>

## Get In Touch Now

T +61 420 694 788  
 E sales@knest.com.au | W www.knest.com.au  
 A 3/14 Cessna Way, Cambridge TAS 7170  
 f @knest.modular

*"All photos and illustrations are representative and are to be used as a guide only. Floorplans and specifications may be varied by Knest without notice, dimensions and measurements are an approximate. The inclusion of furniture, floor coverings, wall paper, curtains, light fittings, lawns, fences, driveways, footpaths, patios and pergolas are intended merely as a guide and are not included in the price unless otherwise listed independently. All designs are the property of Knest and must not be used, reproduced, copied or varied, wholly or in part without written permission from an authorised Knest representative."*



# Blackwood.

Interior  
Sample.



"All photos and illustrations are representative and are to be used as a guide only. Floorplans and specifications may be varied by Knest without notice, dimensions and measurements are an approximate. The inclusion of furniture, floor coverings, wall paper, curtains, light fittings, lawns, fences, driveways, footpaths, patios and pergolas are intended merely as a guide and are not included in the price unless otherwise listed independently. All designs are the property of Knest and must not be used, reproduced, copied or varied, wholly or in part without written permission from an authorised Knest representative."

## 2 Bedroom Model Designs



1 or 2

---

|                  |                                 |
|------------------|---------------------------------|
| Wattle           | 12 X 3.4m   40m2 approx.        |
| Leatherwood      | 4.2m X 14.4m   60.48 m2 approx. |
| Leatherwood Plus | 7m X 13.8m   68.85m2 approx.    |
| Blue Gum 1       | 12 X 4.8m   60m2 approx.        |
| Blue Gum 2       | 3.4m X 12.2m   41m2 approx.     |
| Myrtle           | 11.3m X 6.99m   78.6m2 approx.  |
| Frangipani       | 3.4m x 12.2m   41m2 approx.     |
| Snow Gum 1       | 11.3m x 6.99m   75m2 approx.    |
| Snow Gum 2       | 11.3m x 6.99m   75m2 approx.    |

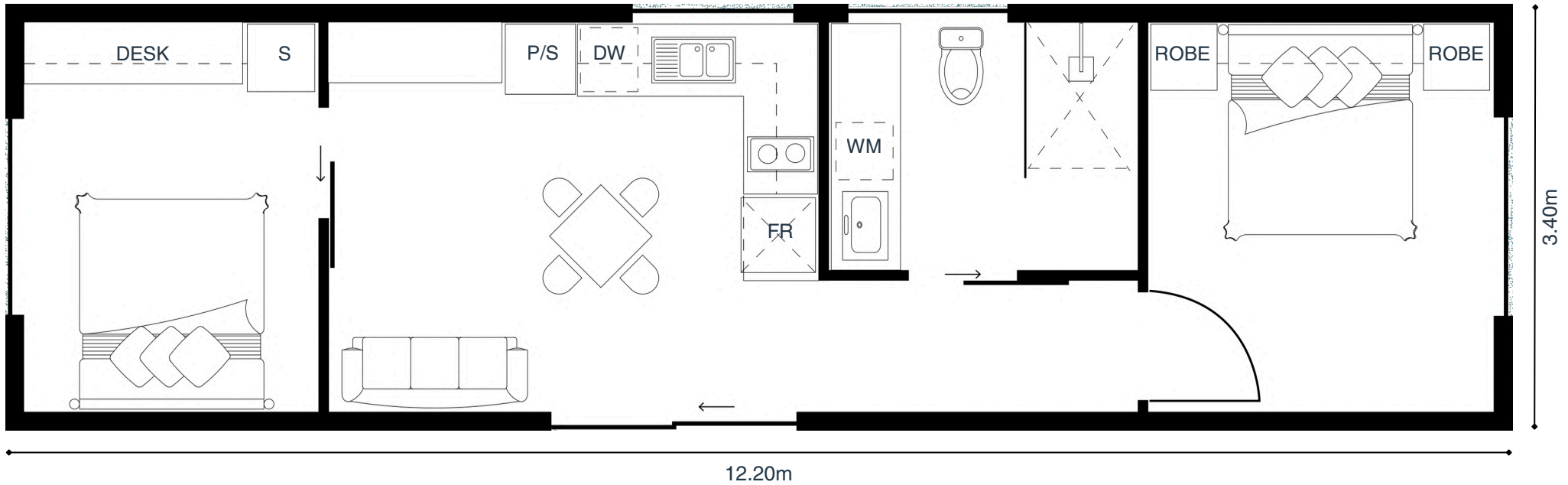


# Wattle

 2  1 or 2

12.20 (L) x 3.40 (W) | 41.50 m<sup>2</sup>

Introducing the popular Wattle module. One of the largest residential designs from the single module range. It consists of 2 bedrooms and 1 bathroom with a large kitchen and living area.



# Wattle

Bedroom: 2  
 Bathrooms: 1  
 Living Room: 1  
 Dimensions: 12.20 (L) x 3.40 (W)  
 Area: 41.50 m<sup>2</sup>

- FR FRIDGE
- R ROBE
- P PANTRY
- DW DISHWASHER
- W WASHING
- M MACHINE
- S STORAGE

## Get In Touch Now

T +61 420 694 788  
 E sales@knest.com.au | W www.knest.com.au  
 A 3/14 Cessna Way, Cambridge TAS 7170  
 f @knest.modular

*"All photos and illustrations are representative and are to be used as a guide only. Floorplans and specifications may be varied by Knest without notice, dimensions and measurements are an approximate. The inclusion of furniture, floor coverings, wall paper, curtains, light fittings, lawns, fences, driveways, footpaths, patios and pergolas are intended merely as a guide and are not included in the price unless otherwise listed independently. All designs are the property of Knest and must not be used, reproduced, copied or varied, wholly or in part without written permission from an authorised Knest representative."*



# Wattle.



Interior  
Sample.

"All photos and illustrations are representative and are to be used as a guide only. Floorplans and specifications may be varied by Knest without notice, dimensions and measurements are an approximate. The inclusion of furniture, floor coverings, wall paper, curtains, light fittings, lawns, fences, driveways, footpaths, patios and pergolas are intended merely as a guide and are not included in the price unless otherwise listed independently. All designs are the property of Knest and must not be used, reproduced, copied or varied, wholly or in part without written permission from an authorised Knest representative."



# Leatherwood

🏠 2 🚿 2

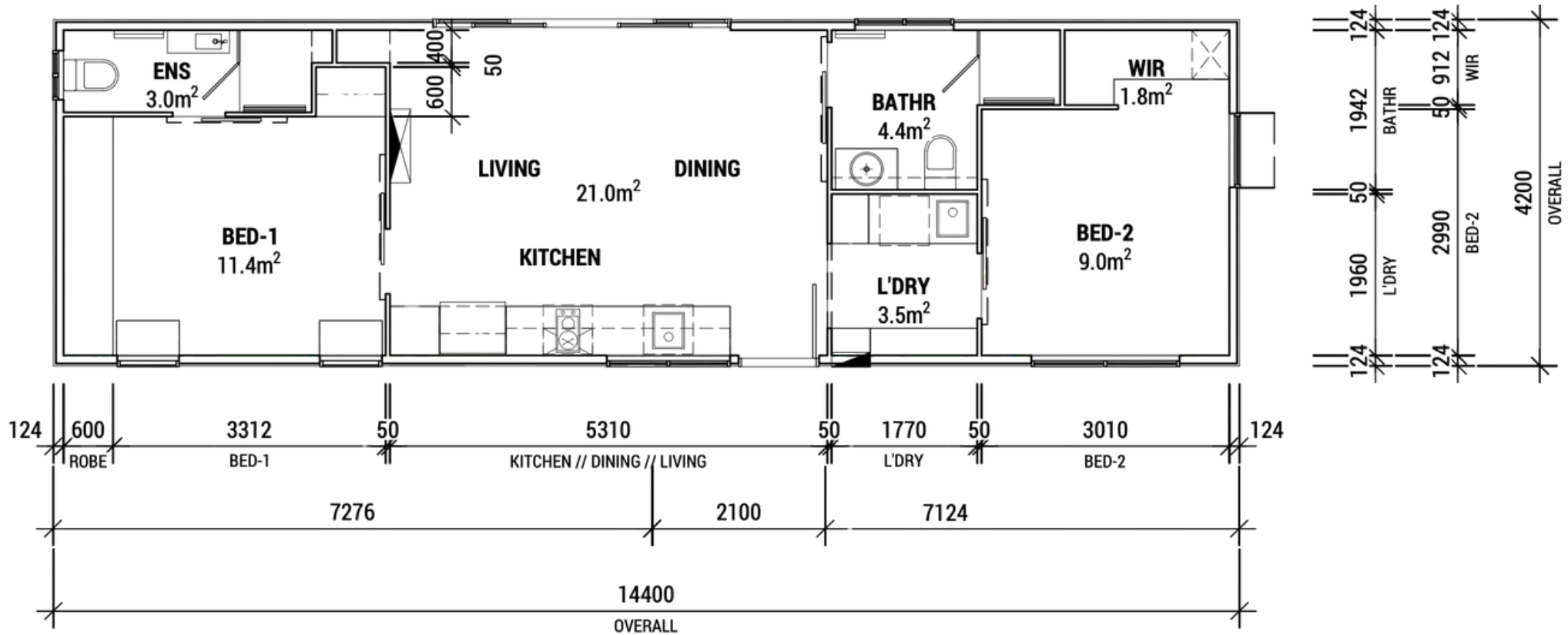
14.20 (L) x 4.20 (W) | 59.64 m<sup>2</sup>

The Leatherwood is a thoughtfully designed 2 bedroom, 2 bathroom modular home with a 60.48 m<sup>2</sup> layout. Slightly more compact with a different internal arrangement than the Leatherwood Plus, it is ideal for couples or small families seeking a smart balance of private spaces and open plan living. Finished with Knest's signature quality materials and built as a compliant, durable permanent home, the Leatherwood delivers modern living without compromise.



# Leatherwood

Bedroom: 2  
 Bathrooms: 2  
 Dimensions: 14.20 (L) x 4.20 (W)  
 Area: 59.64 m<sup>2</sup>



## Get In Touch Now

T +61 420 694 788  
 E sales@knest.com.au | W www.knest.com.au  
 A 3/14 Cessna Way, Cambridge TAS 7170  
 f @knest.modular

*"All photos and illustrations are representative and are to be used as a guide only. Floorplans and specifications may be varied by Knest without notice, dimensions and measurements are an approximate. The inclusion of furniture, floor coverings, wall paper, curtains, light fittings, lawns, fences, driveways, footpaths, patios and pergolas are intended merely as a guide and are not included in the price unless otherwise listed independently. All designs are the property of Knest and must not be used, reproduced, copied or varied, wholly or in part without written permission from an authorised Knest representative."*



# Leatherwood.

Interior  
Sample.



"All photos and illustrations are representative and are to be used as a guide only. Floorplans and specifications may be varied by Knest without notice, dimensions and measurements are an approximate. The inclusion of furniture, floor coverings, wall paper, curtains, light fittings, lawns, fences, driveways, footpaths, patios and pergolas are intended merely as a guide and are not included in the price unless otherwise listed independently. All designs are the property of Knest and must not be used, reproduced, copied or varied, wholly or in part without written permission from an authorised Knest representative."

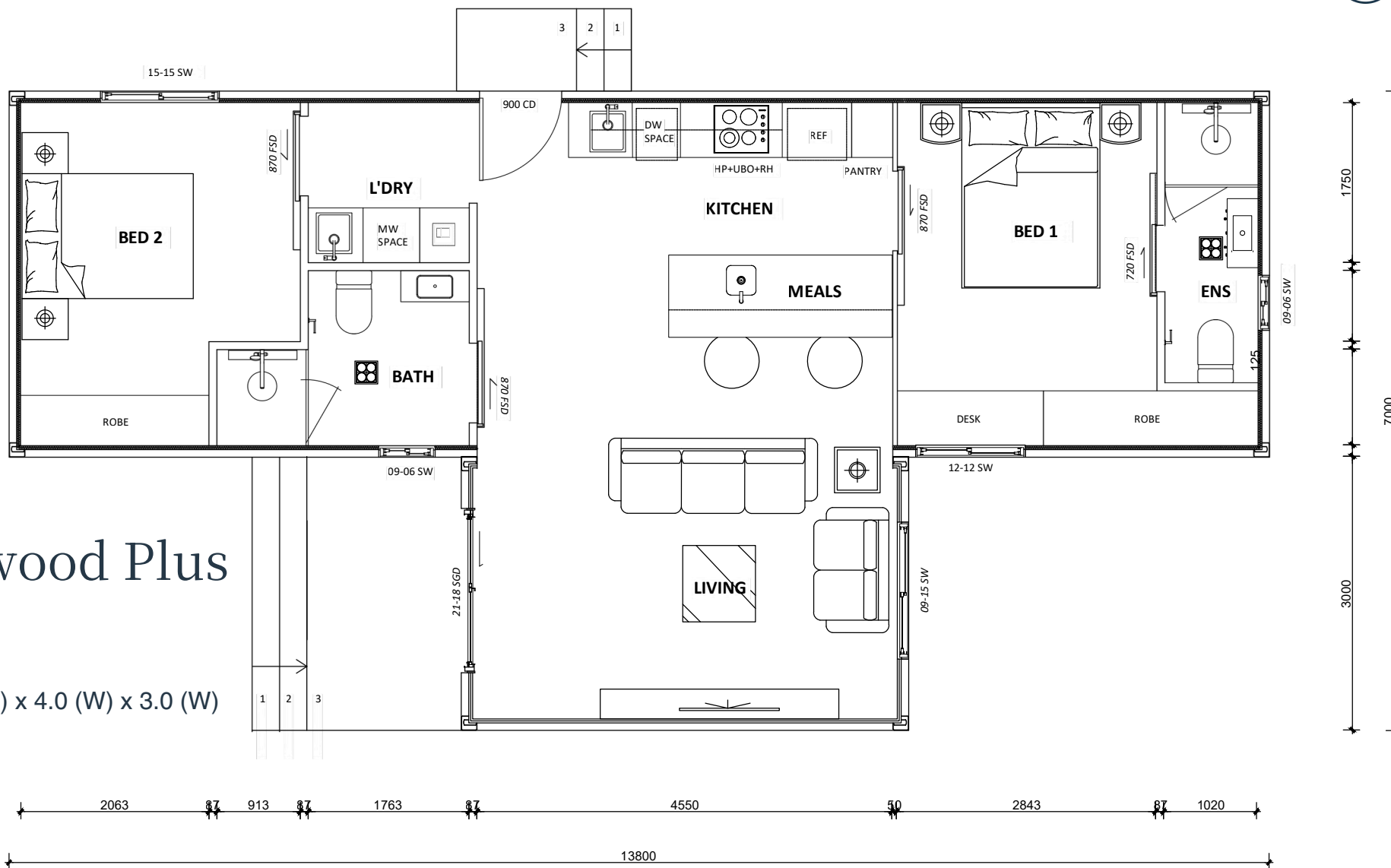


# Leatherwood Plus



13.8 (L) x 4.0 (W) x 3.0 (H) | 69.90 m<sup>2</sup>

The Leatherwood Plus builds on the Leatherwood design with a more generous 68.85 m<sup>2</sup> layout. This 2 bedroom, 2 bathroom modular home offers enhanced space while maintaining the same thoughtful flow between private retreats and open plan living. Designed for couples or small families, the Leatherwood Plus features Knest's trusted quality, compliance and durability, delivering a modern lifestyle with extra room to breathe.



# Leatherwood Plus

Bedroom: 2  
 Bathrooms: 2  
 Living Room: 1  
 Dimensions: 13.8 (L) x 4.0 (W) x 3.0 (W)  
 Area: 69.90 m<sup>2</sup>

## Get In Touch Now

T +61 420 694 788  
 E sales@knest.com.au | W www.knest.com.au  
 A 3/14 Cessna Way, Cambridge TAS 7170  
 f @knest.modular

*"All photos and illustrations are representative and are to be used as a guide only. Floorplans and specifications may be varied by Knest without notice, dimensions and measurements are an approximate. The inclusion of furniture, floor coverings, wall paper, curtains, light fittings, lawns, fences, driveways, footpaths, patios and pergolas are intended merely as a guide and are not included in the price unless otherwise listed independently. All designs are the property of Knest and must not be used, reproduced, copied or varied, wholly or in part without written permission from an authorised Knest representative."*



# Leatherwood Plus.



Interior  
Sample.

"All photos and illustrations are representative and are to be used as a guide only. Floorplans and specifications may be varied by Knest without notice, dimensions and measurements are an approximate. The inclusion of furniture, floor coverings, wall paper, curtains, light fittings, lawns, fences, driveways, footpaths, patios and pergolas are intended merely as a guide and are not included in the price unless otherwise listed independently. All designs are the property of Knest and must not be used, reproduced, copied or varied, wholly or in part without written permission from an authorised Knest representative."



# Frangipani

 2  1

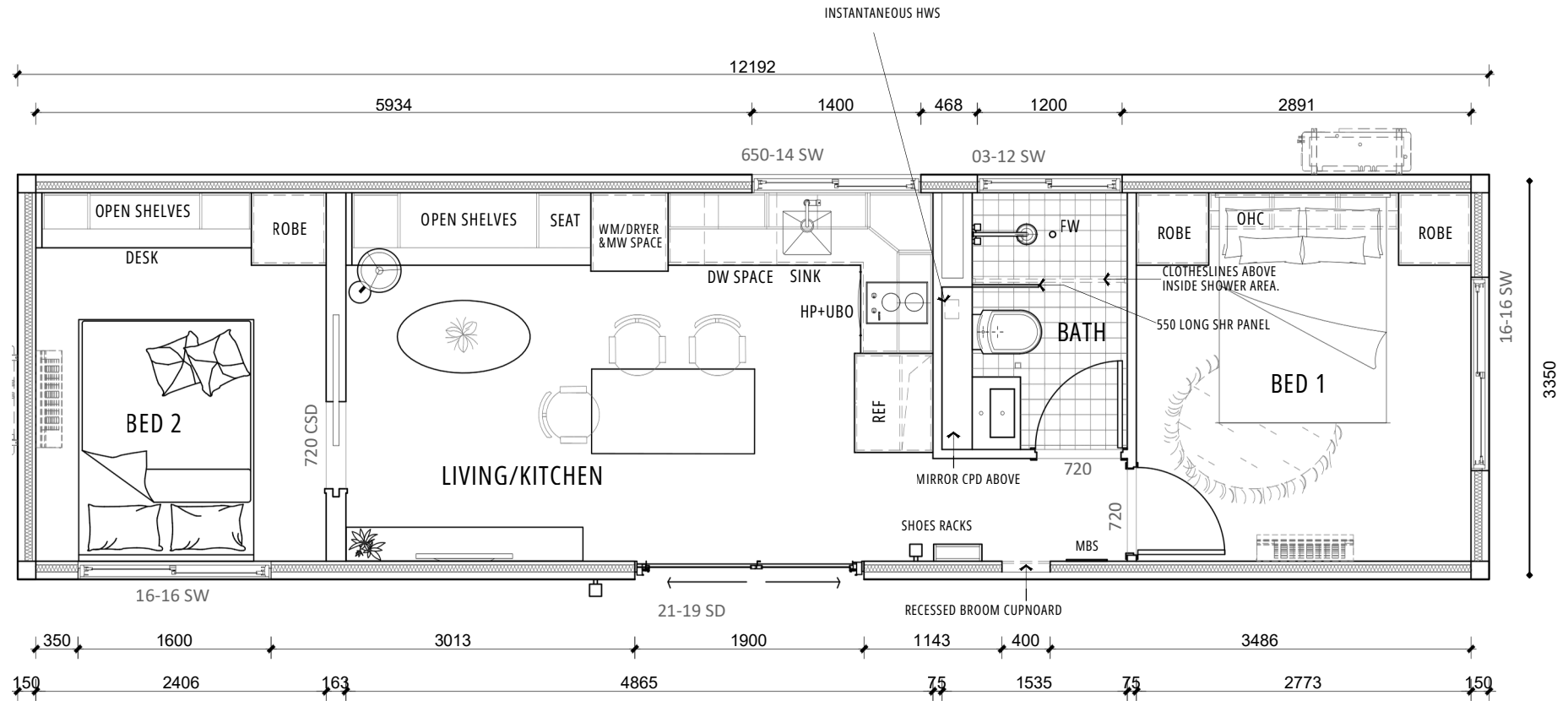
12.19 (L) x 3.35 (W) | 41.50 m<sup>2</sup>

The Frangipani delivers modern living in a compact footprint. With two bedrooms, a light-filled open-plan living area, and thoughtful storage throughout its 41m<sup>2</sup> layout, it's designed for comfort, function, and affordability. Ideal as a family retreat, secondary dwelling, or independent home, the Frangipani combines quality craftsmanship with a smart design that fits within your budget.



# Frangipani

Bedroom: 2  
 Bathrooms: 1  
 Living Room: 1  
 Dimensions: 12.19 (L) x 3.35 (W)  
 Area: 41.50 m<sup>2</sup>



## Get In Touch Now

T +61 420 694 788  
 E sales@knest.com.au | W www.knest.com.au  
 A 3/14 Cessna Way, Cambridge TAS 7170  
 f @knest.modular

“All photos and illustrations are representative and are to be used as a guide only. Floorplans and specifications may be varied by Knest without notice, dimensions and measurements are an approximate. The inclusion of furniture, floor coverings, wall paper, curtains, light fittings, lawns, fences, driveways, footpaths, patios and pergolas are intended merely as a guide and are not included in the price unless otherwise listed independently. All designs are the property of Knest and must not be used, reproduced, copied or varied, wholly or in part without written permission from an authorised Knest representative.”



# Frangipani.



Interior  
Sample.

"All photos and illustrations are representative and are to be used as a guide only. Floorplans and specifications may be varied by Knest without notice, dimensions and measurements are an approximate. The inclusion of furniture, floor coverings, wall paper, curtains, light fittings, lawns, fences, driveways, footpaths, patios and pergolas are intended merely as a guide and are not included in the price unless otherwise listed independently. All designs are the property of Knest and must not be used, reproduced, copied or varied, wholly or in part without written permission from an authorised Knest representative."



# Blue Gum 1

🏠 2 🚿 1

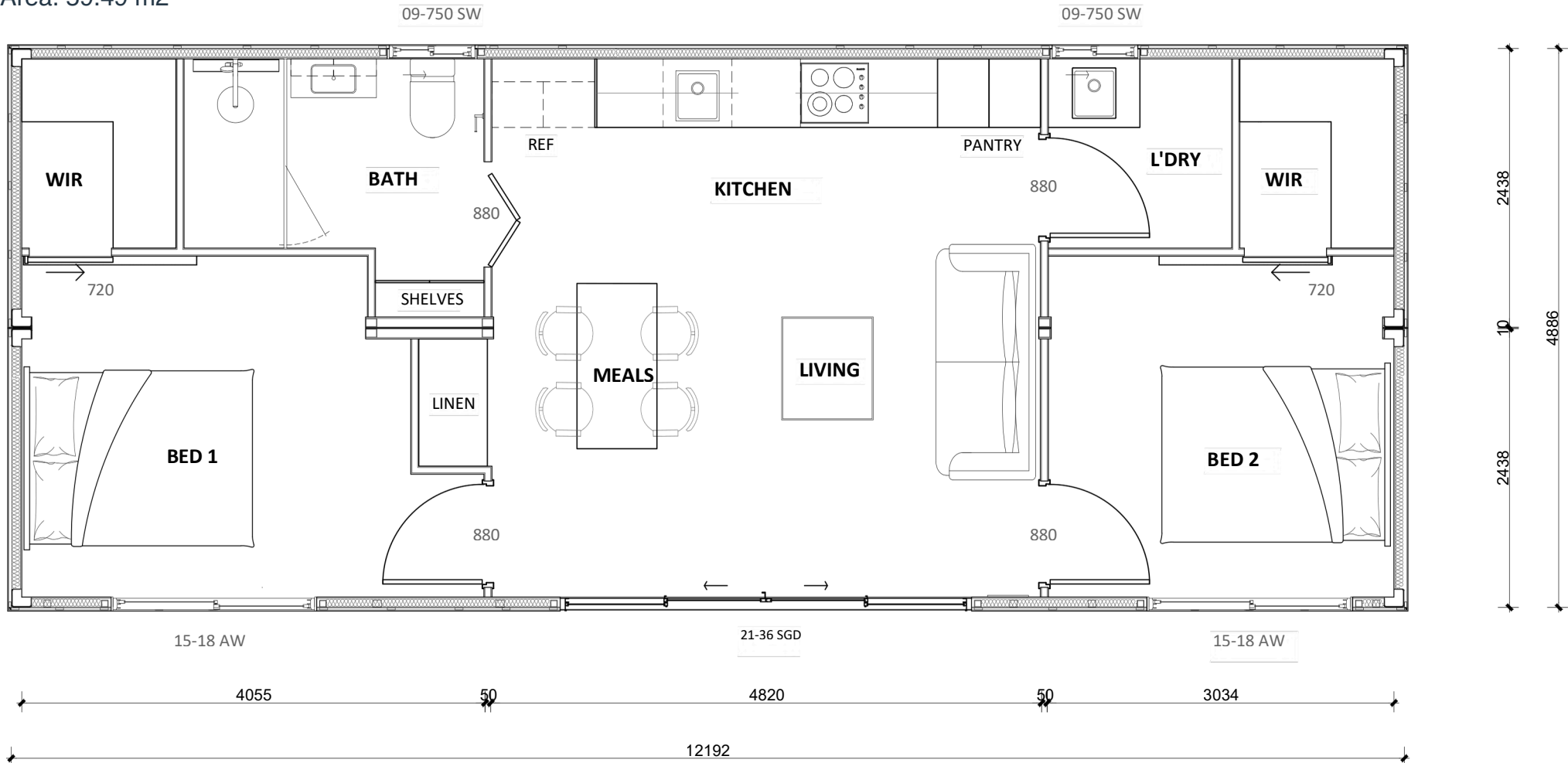
12.19 (L) x 2.44 (W) \* 2 | 59.49 m<sup>2</sup>

The Blue Gum 1 is a well-balanced 2 bedroom, 1 bathroom modular home featuring a dedicated laundry room for everyday convenience. At 59.4m<sup>2</sup> (2.4m x 12.2m x 2 modules), it's designed to maximise space while keeping a practical, family-friendly layout. Ideal for small families, couples, or as a secondary dwelling, the Blue Gum 1 offers high-quality modern living spaces in a smart and practical design.

# Blue Gum 1



Bedroom: 2  
 Bathrooms: 1  
 Laundry: 1  
 Dimensions: 12.19 (L) x 2.44 (W) \* 2  
 Area: 59.49 m<sup>2</sup>



## Get In Touch Now

T +61 420 694 788  
 E sales@knest.com.au | W www.knest.com.au  
 A 3/14 Cessna Way, Cambridge TAS 7170  
 f @knest.modular

*"All photos and illustrations are representative and are to be used as a guide only. Floorplans and specifications may be varied by Knest without notice, dimensions and measurements are an approximate. The inclusion of furniture, floor coverings, wall paper, curtains, light fittings, lawns, fences, driveways, footpaths, patios and pergolas are intended merely as a guide and are not included in the price unless otherwise listed independently. All designs are the property of Knest and must not be used, reproduced, copied or varied, wholly or in part without written permission from an authorised Knest representative."*



# Blue Gum 1.



Interior  
Sample.

"All photos and illustrations are representative and are to be used as a guide only. Floorplans and specifications may be varied by Knest without notice, dimensions and measurements are an approximate. The inclusion of furniture, floor coverings, wall paper, curtains, light fittings, lawns, fences, driveways, footpaths, patios and pergolas are intended merely as a guide and are not included in the price unless otherwise listed independently. All designs are the property of Knest and must not be used, reproduced, copied or varied, wholly or in part without written permission from an authorised Knest representative."



# Blue Gum 2

 2  2

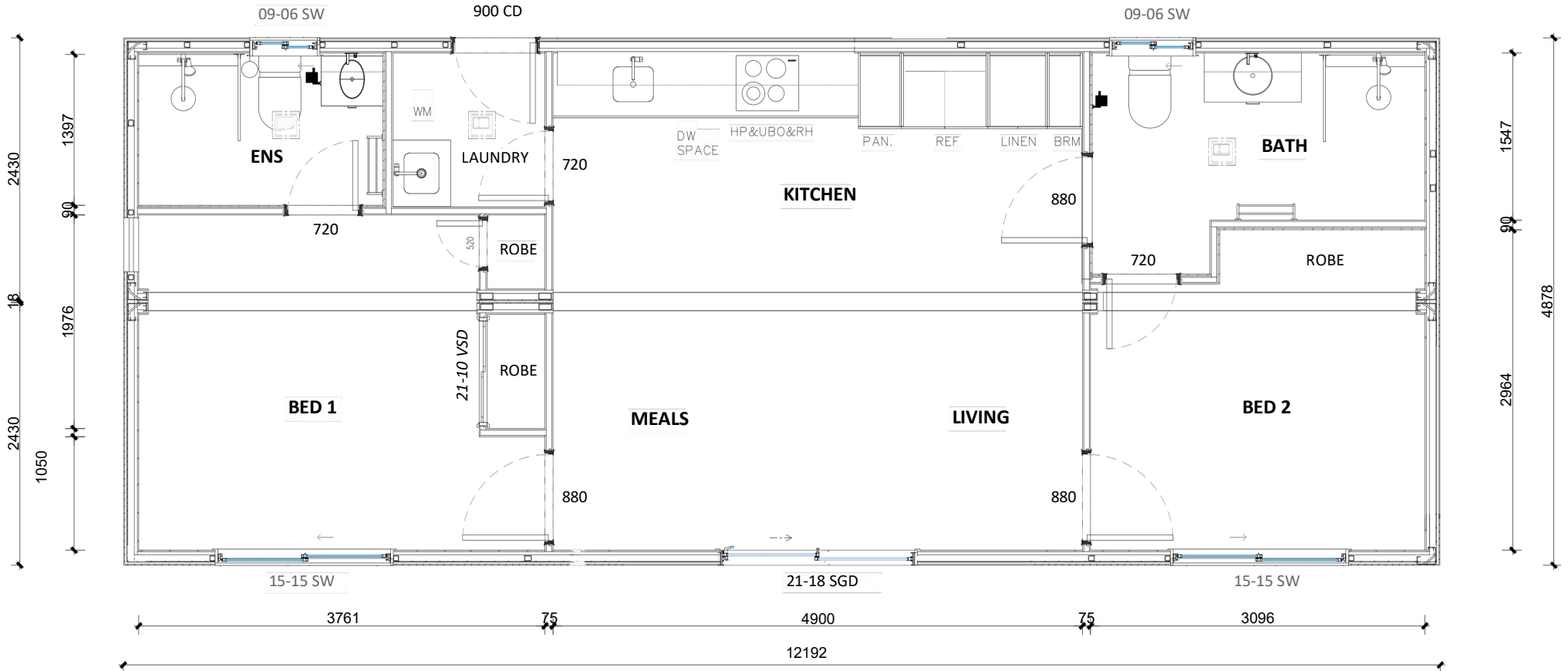
12.19 (L) x 2.44 (W) \* 2 | 59.49 m2

The Blue Gum 2 consists of 2 modules with no deck. You gain internal space as a result and end up with 2 decent sized bedrooms (each with an en-suite) on either side of a comfortable living area. Why not add an external deck on this one, options are endless!



# Blue Gum 2

Bedroom: 2  
 Bathrooms: 2  
 Living Room: 1  
 Dimensions: 12.19 (L) x 2.44 (W) \* 2  
 Area: 59.49 m2



## Get In Touch Now

T +61 420 694 788  
 E sales@knest.com.au | W www.knest.com.au  
 A 3/14 Cessna Way, Cambridge TAS 7170  
 f @knest.modular

*"All photos and illustrations are representative and are to be used as a guide only. Floorplans and specifications may be varied by Knest without notice, dimensions and measurements are an approximate. The inclusion of furniture, floor coverings, wall paper, curtains, light fittings, lawns, fences, driveways, footpaths, patios and pergolas are intended merely as a guide and are not included in the price unless otherwise listed independently. All designs are the property of Knest and must not be used, reproduced, copied or varied, wholly or in part without written permission from an authorised Knest representative."*



## Blue Gum 2.



Interior  
Sample.

"All photos and illustrations are representative and are to be used as a guide only. Floorplans and specifications may be varied by Knest without notice, dimensions and measurements are an approximate. The inclusion of furniture, floor coverings, wall paper, curtains, light fittings, lawns, fences, driveways, footpaths, patios and pergolas are intended merely as a guide and are not included in the price unless otherwise listed independently. All designs are the property of Knest and must not be used, reproduced, copied or varied, wholly or in part without written permission from an authorised Knest representative."



# Myrtle

🏠 2 🚿 2

12.19 (L) x 3.50 (W) \* 2 | 85.33 m<sup>2</sup>

The Myrtle is a versatile 2 bedroom, 1 bathroom modular home offering plenty of space across 78.6m<sup>2</sup> (11.3m x 6.99m, 2 pods). With a smart layout that balances open living areas and private bedrooms, it's ideal for couples, small families, or as a stylish secondary dwelling. Built with Knest's signature quality and compliance, the Myrtle is a modern home that feels generous, comfortable, and built to last.



# Myrtle 1

Bedroom: 2  
 Bathrooms: 2  
 Living Room: 1  
 Dimensions: 12.19 (L) x 3.50 (W)\* 2  
 Area: 85.33 m2



## Get In Touch Now

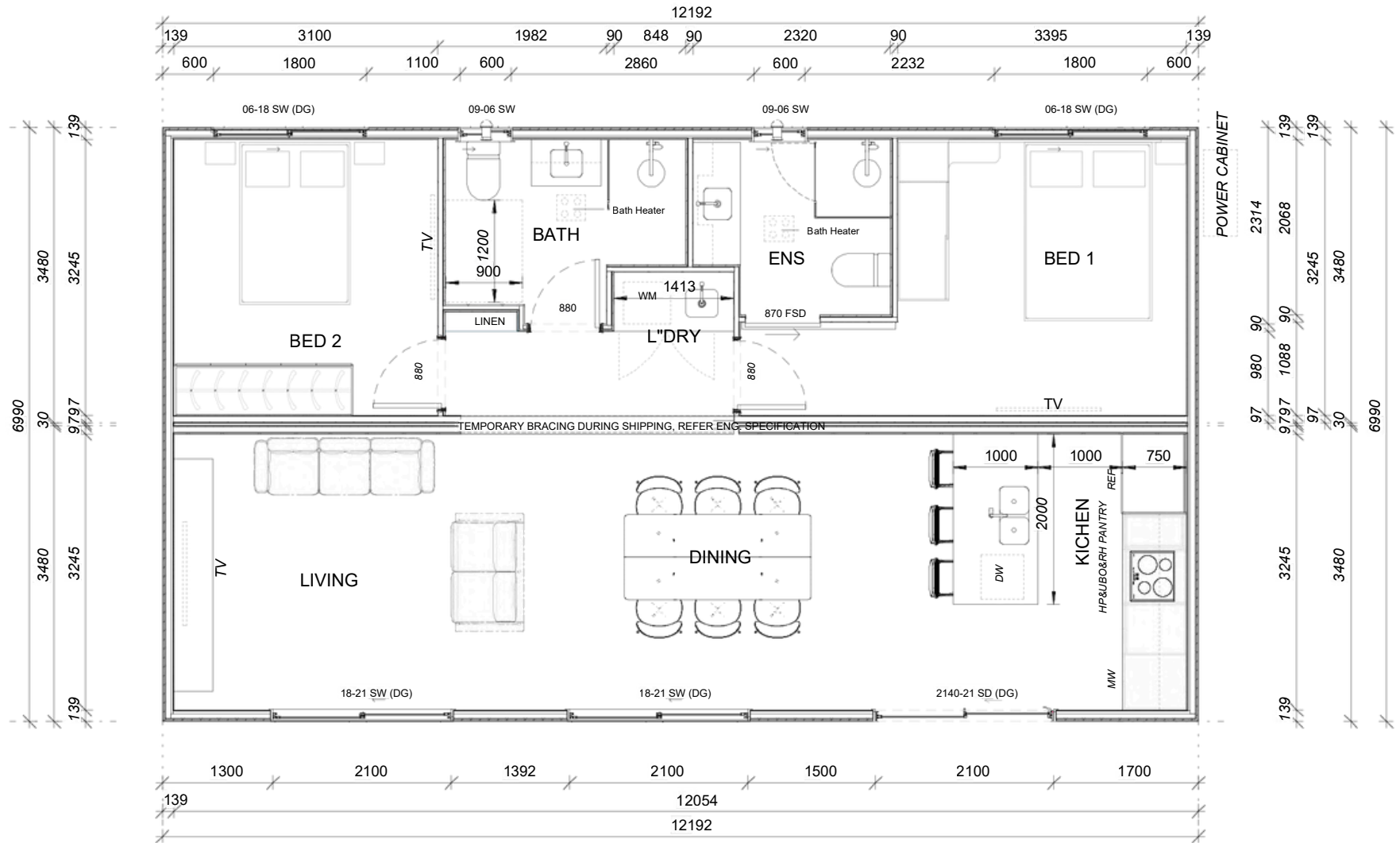
T +61 420 694 788  
 E sales@knest.com.au | W www.knest.com.au  
 A 3/14 Cessna Way, Cambridge TAS 7170  
 f @knest.modular

"All photos and illustrations are representative and are to be used as a guide only. Floorplans and specifications may be varied by Knest without notice, dimensions and measurements are an approximate. The inclusion of furniture, floor coverings, wall paper, curtains, light fittings, lawns, fences, driveways, footpaths, patios and pergolas are intended merely as a guide and are not included in the price unless otherwise listed independently. All designs are the property of Knest and must not be used, reproduced, copied or varied, wholly or in part without written permission from an authorised Knest representative."



# Myrtle 2

Bedroom: 2  
 Bathrooms: 2  
 Living Room: 1  
 Dimensions: 12.19 (L) x 2.44 (W) \* 2  
 Area: 85.33 m2



## Get In Touch Now

T +61 420 694 788  
 E sales@knest.com.au | W www.knest.com.au  
 A 3/14 Cessna Way, Cambridge TAS 7170  
 f @knest.modular

"All photos and illustrations are representative and are to be used as a guide only. Floorplans and specifications may be varied by Knest without notice, dimensions and measurements are an approximate. The inclusion of furniture, floor coverings, wall paper, curtains, light fittings, lawns, fences, driveways, footpaths, patios and pergolas are intended merely as a guide and are not included in the price unless otherwise listed independently. All designs are the property of Knest and must not be used, reproduced, copied or varied, wholly or in part without written permission from an authorised Knest representative."



# Myrtle.



Interior  
Sample.

"All photos and illustrations are representative and are to be used as a guide only. Floorplans and specifications may be varied by Knest without notice, dimensions and measurements are an approximate. The inclusion of furniture, floor coverings, wall paper, curtains, light fittings, lawns, fences, driveways, footpaths, patios and pergolas are intended merely as a guide and are not included in the price unless otherwise listed independently. All designs are the property of Knest and must not be used, reproduced, copied or varied, wholly or in part without written permission from an authorised Knest representative."

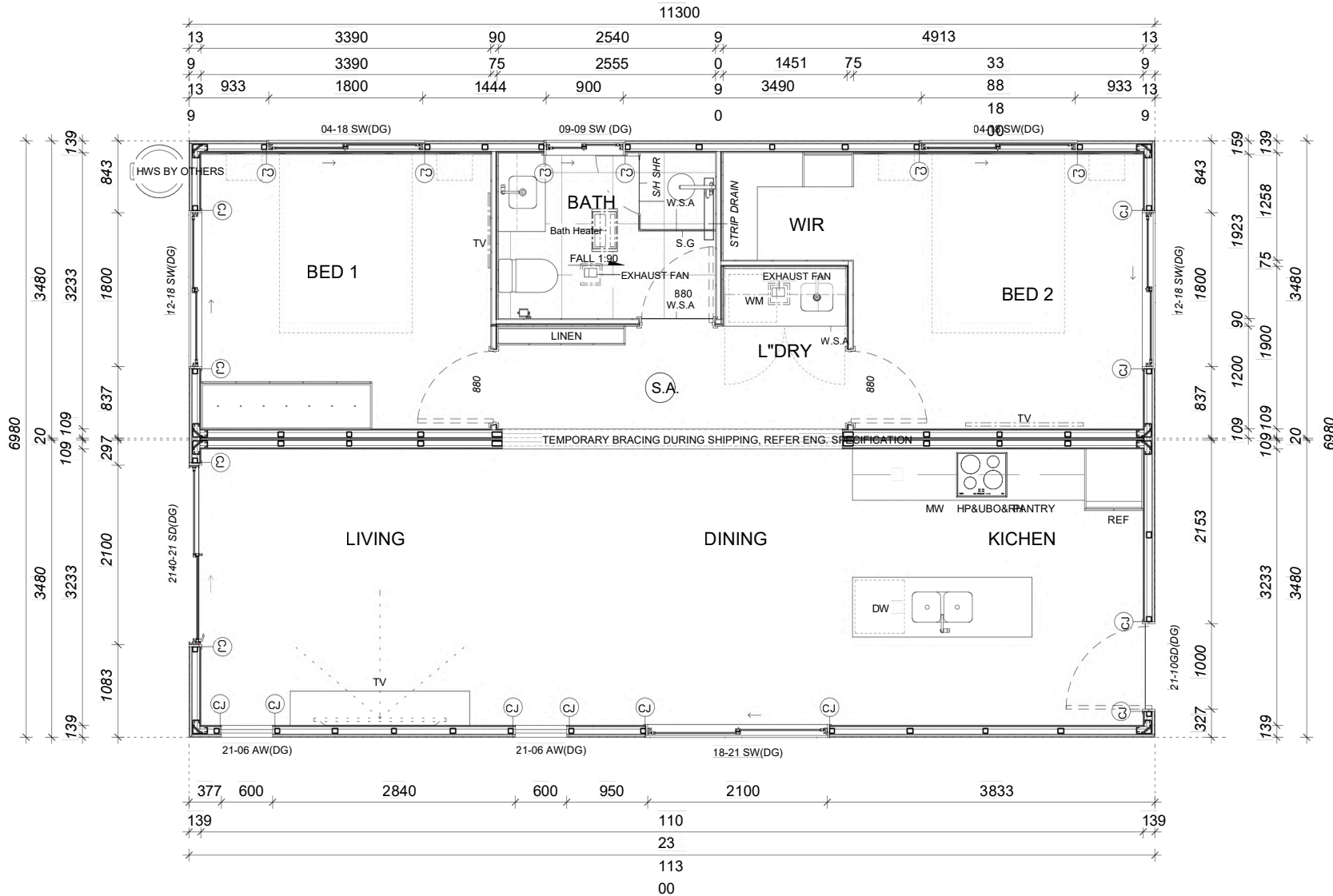


# Snow Gum 1

🏠 2 🚿 1

11.30 (L) x 3.50 (W) \* 2 | 79.10 m<sup>2</sup>

A smart two bedroom, one bathroom design offering comfortable living across 79.10 m<sup>2</sup>. With well-proportioned rooms and a practical layout, Snow Gum 1 is ideal for couples, small families, or secondary dwellings where simplicity and efficiency matter.



# Snow Gum 1

Bedroom: 2  
 Bathrooms: 2  
 Living Room: 1  
 Dimensions:  
 11.30 (L) x 3.50 (W) \* 2  
 Area: 79.10 m<sup>2</sup>

## Get In Touch Now

T +61 420 694 788

E sales@knest.com.au | W www.knest.com.au

A 3/14 Cessna Way, Cambridge TAS 7170

f @knest.modular

"All photos and illustrations are representative and are to be used as a guide only. Floorplans and specifications may be varied by Knest without notice, dimensions and measurements are an approximate. The inclusion of furniture, floor coverings, wall paper, curtains, light fittings, lawns, fences, driveways, footpaths, patios and pergolas are intended merely as a guide and are not included in the price unless otherwise listed independently. All designs are the property of Knest and must not be used, reproduced, copied or varied, wholly or in part without written permission from an authorised Knest representative."



# Snow Gum 1

Interior  
Sample.



“All photos and illustrations are representative and are to be used as a guide only. Floorplans and specifications may be varied by Knest without notice, dimensions and measurements are an approximate. The inclusion of furniture, floor coverings, wall paper, curtains, light fittings, lawns, fences, driveways, footpaths, patios and pergolas are intended merely as a guide and are not included in the price unless otherwise listed independently. All designs are the property of Knest and must not be used, reproduced, copied or varied, wholly or in part without written permission from an authorised Knest representative.”

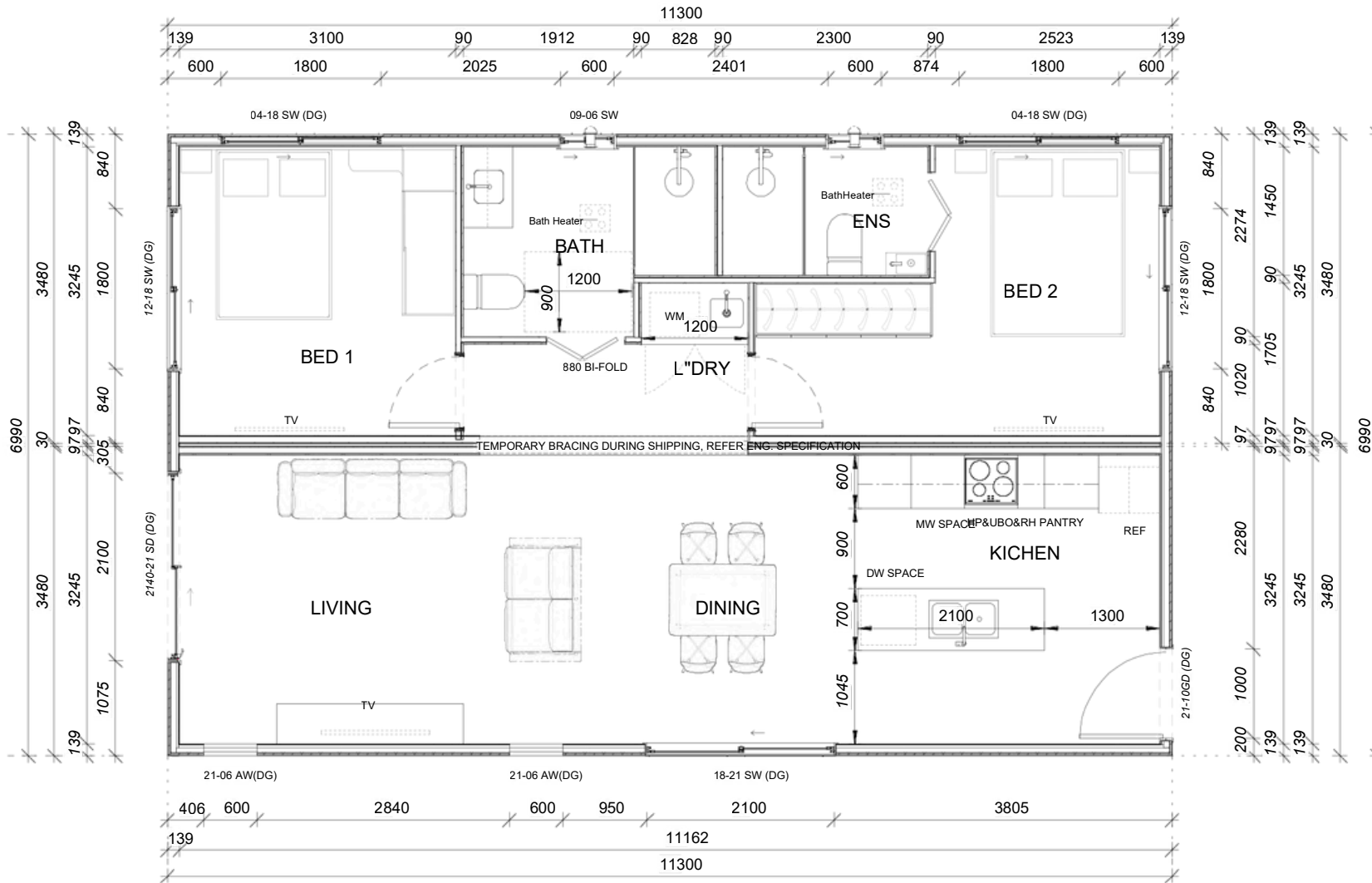


# Snow Gum 2



11.30 (L) x 3.50 (W) \* 2 | 79.10 m<sup>2</sup>

A refined two bedroom home with the added benefit of a private ensuite to the master bedroom. Spanning 79.10 m<sup>2</sup>, Snow Gum 2 delivers the same efficient footprint with enhanced comfort and privacy, making it a great option for owner-occupiers or long-term living.



# Snow Gum 2

Bedroom: 2  
 Bathrooms: 2  
 Living Room: 1  
 Dimensions: 11.30 (L) x 3.50 (W) \* 2  
 Area: 79.10 m<sup>2</sup>

## Get In Touch Now

T +61 420 694 788

E sales@knest.com.au | W www.knest.com.au

A 3/14 Cessna Way, Cambridge TAS 7170

f @knest.modular

"All photos and illustrations are representative and are to be used as a guide only. Floorplans and specifications may be varied by Knest without notice, dimensions and measurements are an approximate. The inclusion of furniture, floor coverings, wall paper, curtains, light fittings, lawns, fences, driveways, footpaths, patios and pergolas are intended merely as a guide and are not included in the price unless otherwise listed independently. All designs are the property of Knest and must not be used, reproduced, copied or varied, wholly or in part without written permission from an authorised Knest representative."



## Snow Gum 2



Interior  
Sample.

"All photos and illustrations are representative and are to be used as a guide only. Floorplans and specifications may be varied by Knest without notice, dimensions and measurements are an approximate. The inclusion of furniture, floor coverings, wall paper, curtains, light fittings, lawns, fences, driveways, footpaths, patios and pergolas are intended merely as a guide and are not included in the price unless otherwise listed independently. All designs are the property of Knest and must not be used, reproduced, copied or varied, wholly or in part without written permission from an authorised Knest representative."

## 3 Bedroom Model Designs



---

Acacia  
Waratah

12 X 3.4m x 2 | 82.9m2 approx.

12 X 3.4m & 6 x 3.4m x 2 | 82.9m2 approx.

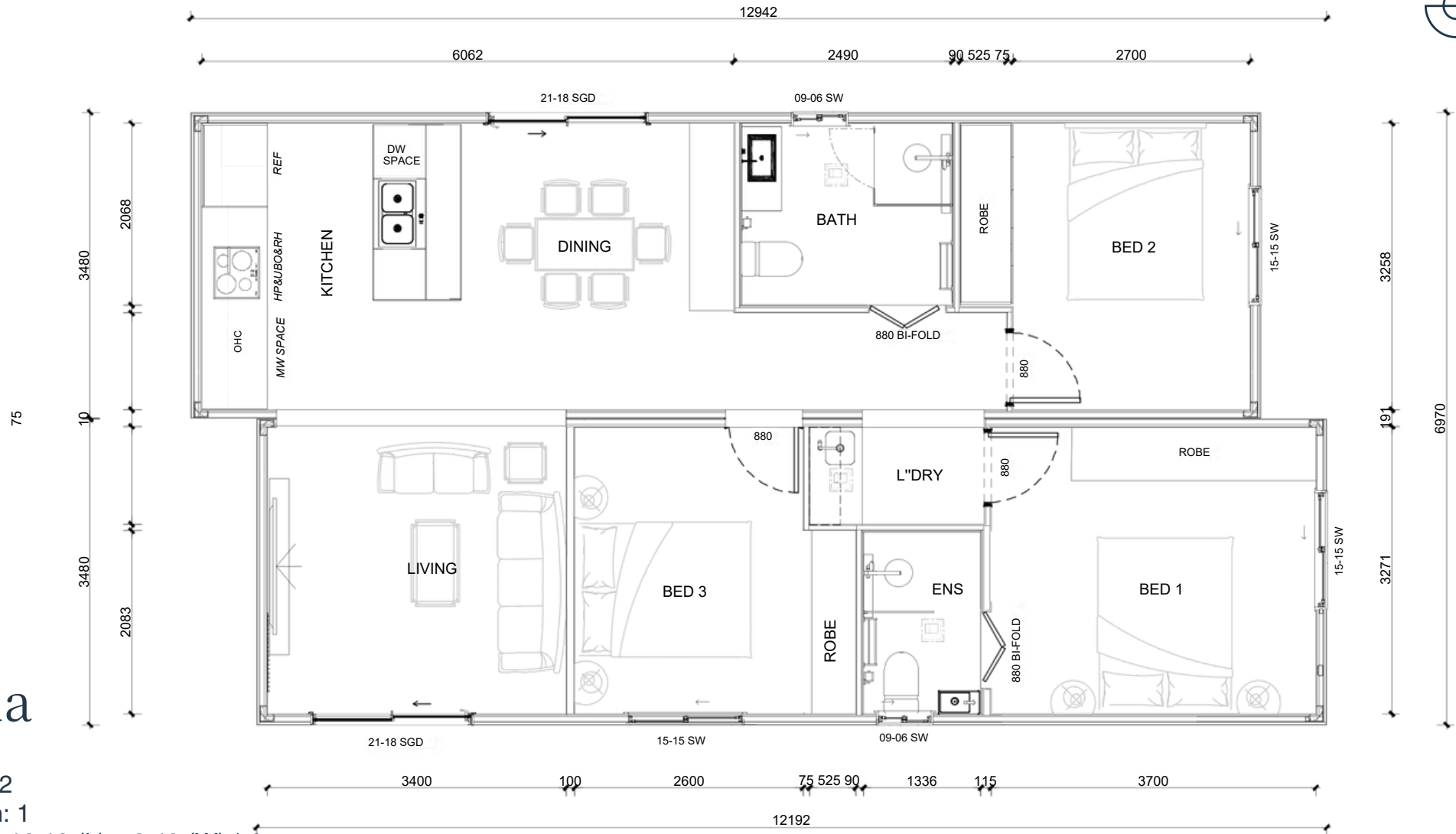


# Acacia

🏠 3 🚿 2

12.19 (L) x 3.48 (W) \* 2 | 84.84 m<sup>2</sup>

The Acacia offers a generous 3 bedroom, 2 bathroom, 1 living layout, giving families the space they need to live and grow. At 82.9m<sup>2</sup> (12.2m x 3.5m x 2 modules), it combines smart design with modern comfort, creating a home that feels both open and practical. Perfect as a family home or investment property, the Acacia delivers quality and livability in one complete package.



# Acacia

Bedroom: 3  
 Bathrooms: 2  
 Living Room: 1  
 Dimensions: 12.19 (L) x 3.48 (W) \* 2  
 Area: 84.84 m<sup>2</sup>

## Get In Touch Now

T +61 420 694 788  
 E sales@knest.com.au | W www.knest.com.au  
 A 3/14 Cessna Way, Cambridge TAS 7170  
 f @knest.modular

*"All photos and illustrations are representative and are to be used as a guide only. Floorplans and specifications may be varied by Knest without notice, dimensions and measurements are an approximate. The inclusion of furniture, floor coverings, wall paper, curtains, light fittings, lawns, fences, driveways, footpaths, patios and pergolas are intended merely as a guide and are not included in the price unless otherwise listed independently. All designs are the property of Knest and must not be used, reproduced, copied or varied, wholly or in part without written permission from an authorised Knest representative."*



# Acacia.



"All photos and illustrations are representative and are to be used as a guide only. Floorplans and specifications may be varied by Knest without notice, dimensions and measurements are an approximate. The inclusion of furniture, floor coverings, wall paper, curtains, light fittings, lawns, fences, driveways, footpaths, patios and pergolas are intended merely as a guide and are not included in the price unless otherwise listed independently. All designs are the property of Knest and must not be used, reproduced, copied or varied, wholly or in part without written permission from an authorised Knest representative."

Interior  
Sample.





# Waratah

Introducing the Waratah a clever 3 bedroom, 2 bathroom layout with an impressive U-shaped design creating bedroom separation with a large central living area.

 3  2

12.19 (L) x 3.48 (W) & 6.06 (L) x 3.48 (W) \* 2 | 84.60m<sup>2</sup>



# Waratah

Bedrooms: 3  
 Bathrooms: 2  
 Living Rooms: 1  
 Dimensions:  
 12.19 (L) x 3.48 (W) + 6.06 (L) x  
 3.48 (W) \* 2 pods  
 Area: 84.60 m<sup>2</sup>

## Get In Touch Now

T +61 420 694 788

E sales@knest.com.au | W www.knest.com.au

A 3/14 Cessna Way, Cambridge TAS 7170

f @knest.modular

"All photos and illustrations are representative and are to be used as a guide only. Floorplans and specifications may be varied by Knest without notice, dimensions and measurements are an approximate. The inclusion of furniture, floor coverings, wall paper, curtains, light fittings, lawns, fences, driveways, footpaths, patios and pergolas are intended merely as a guide and are not included in the price unless otherwise listed independently. All designs are the property of Knest and must not be used, reproduced, copied or varied, wholly or in part without written permission from an authorised Knest representative."



# Waratah.

Interior  
Sample.



"All photos and illustrations are representative and are to be used as a guide only. Floorplans and specifications may be varied by Knest without notice, dimensions and measurements are an approximate. The inclusion of furniture, floor coverings, wall paper, curtains, light fittings, lawns, fences, driveways, footpaths, patios and pergolas are intended merely as a guide and are not included in the price unless otherwise listed independently. All designs are the property of Knest and must not be used, reproduced, copied or varied, wholly or in part without written permission from an authorised Knest representative."

# 4 Bedroom Model Designs



Bottle Brush Triple 12 X 3.45m | 120m2 approx.



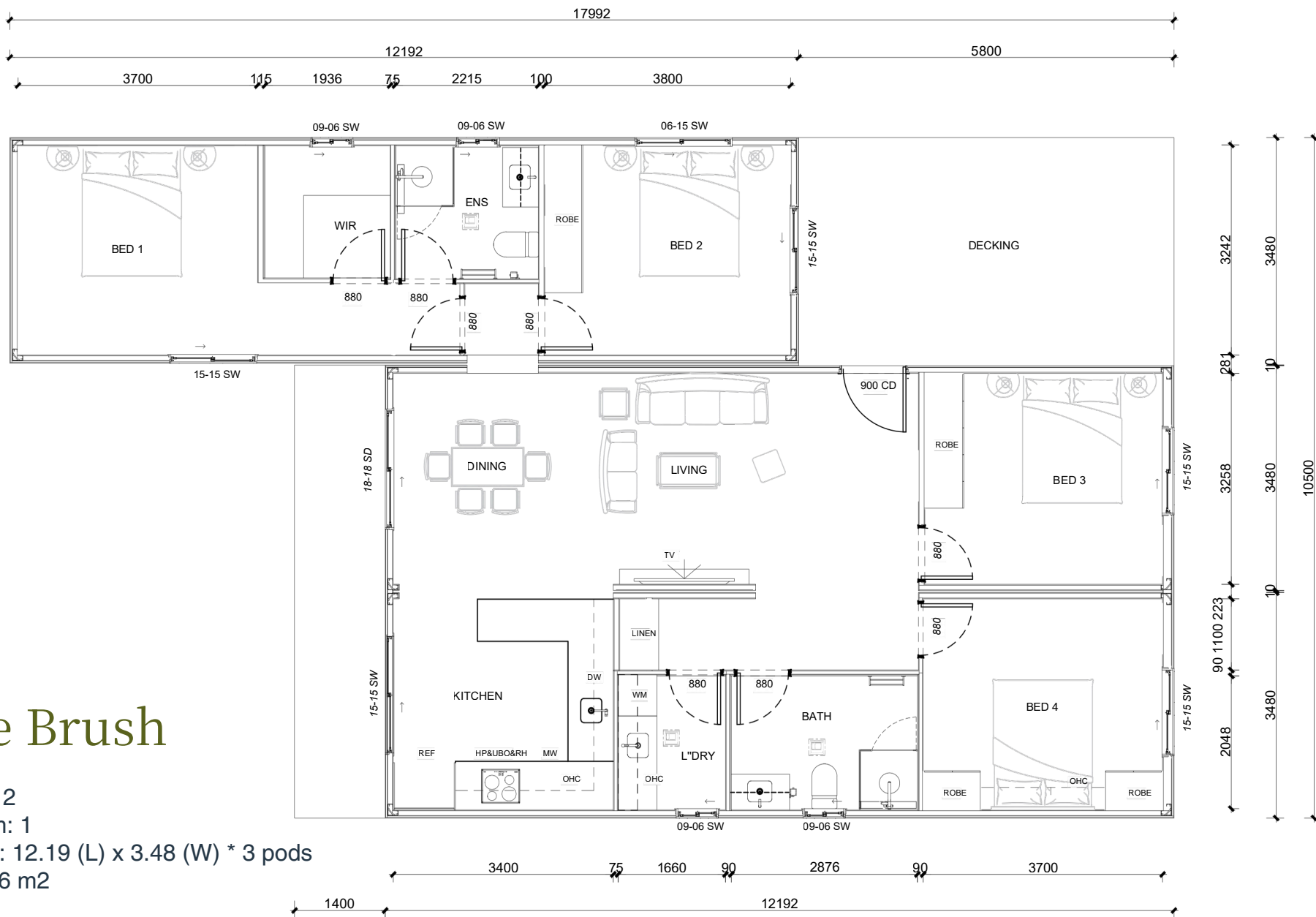


# Bottle Brush

🏠 4 🚿 2

12.19 (L) x 3.48 (W) \* 3 | 127.26 m2

The Bottle Brush is a beautifully designed 4 bedroom, 2 bathroom modular home, which includes spacious dining and living areas as well as a study nook.



# Bottle Brush

Bedroom: 4  
 Bathrooms: 2  
 Living Room: 1  
 Dimensions: 12.19 (L) x 3.48 (W) \* 3 pods  
 Area: 127.26 m<sup>2</sup>

## Get In Touch Now

T +61 420 694 788  
 E sales@knest.com.au | W www.knest.com.au  
 A 3/14 Cessna Way, Cambridge TAS 7170  
 f @knest.modular

*"All photos and illustrations are representative and are to be used as a guide only. Floorplans and specifications may be varied by Knest without notice, dimensions and measurements are an approximate. The inclusion of furniture, floor coverings, wall paper, curtains, light fittings, lawns, fences, driveways, footpaths, patios and pergolas are intended merely as a guide and are not included in the price unless otherwise listed independently. All designs are the property of Knest and must not be used, reproduced, copied or varied, wholly or in part without written permission from an authorised Knest representative."*



# Bottle Brush.



Interior  
Sample.

"All photos and illustrations are representative and are to be used as a guide only. Floorplans and specifications may be varied by Knest without notice, dimensions and measurements are an approximate. The inclusion of furniture, floor coverings, wall paper, curtains, light fittings, lawns, fences, driveways, footpaths, patios and pergolas are intended merely as a guide and are not included in the price unless otherwise listed independently. All designs are the property of Knest and must not be used, reproduced, copied or varied, wholly or in part without written permission from an authorised Knest representative."

# Knest Information and Price Guide

[sales@knest.com.au](mailto:sales@knest.com.au)  
[www.knest.com.au](http://www.knest.com.au)





# Our Process

## 01

### Discovery

- Selection of preferred design.
- Site assessment.
- Pre-Works Authority - geotechnical investigations, site survey reports.
- Apply preferred design to the site.
- Preparation and presentation of the quote.

## 02

### Approval

- Finalise contract and pay deposit.
- Prepare and submit development application.
- Review and finalise construction drawings for production.
- Prepare building permit application to facilitate building approval.

## 03

### Production

- Upon approval of construction drawings, manufacture of your new home will commence.
- Concurrently, our delivery team will commence site works including site access, footings/foundations and services.

## 04

### Delivery & Installation

- Transportation, lifting and placement of your new home.
- Installation of your new home on site including assembly of any custom elements.
- Connection of services and commissioning of appliances.

## 05

### Completion

- Quality assurance and defect rectification.
- Compliance inspection and compliance sign-off.





# Timeframe & Payment Outline

|                         |                                   |  |         |
|-------------------------|-----------------------------------|--|---------|
| Discovery               | Site Assessment & Quote           | \$650 for sites within 100km of Hobart.<br>Other sites priced on location.   | 1 week  |
| Discovery               | Pre-Works Authority               | Pricing will be provided on a per-project basis and includes required Pricing will be provided on a per-project basis and surveys, soil reports, bushfire assessments, sewer reports, and other includes surveys, soil reports, bushfire assessments, necessary documentation. A \$2,000 holding deposit is required at this stage to secure your position in our factory production schedule. | 3 weeks |
| Approval                | Finalise contract and pay deposit | 15%  | 1 week  |
| Approval                | Submit Development Application    | Depending on site and proposed development   |         |
| Production              | Manufacturing begins in factory   | 30%  | 8 weeks |
| Production              | Foundation                        | 10%  |         |
| Production              | Modules completed in factory      | 25%  |         |
| Delivery & Installation | Delivery & Installation           | 15%  | 6 weeks |
| Completion              | Completion Stage                  | 5%   | 2 weeks |

This plan outlines the typical progress payments linked to specific milestones in the construction process. It's important to note that the actual payment plan may vary based on the project's finance, specifics, requirements and agreements between Knest and the client. Stage claim requirements vary between banks.



# Price List & Install Price

## 1 Bedroom Designs

| Model       | Bedroom(s) | Bathroom(s) | Module Base (m)         | Area m <sup>2</sup> | Approx. Installed Price (ex. GST) |
|-------------|------------|-------------|-------------------------|---------------------|-----------------------------------|
| BANKSIA     | 1          | 1           | 6.06 (L) x 2.44 (W)     | 14.79               | \$115,000                         |
| EUCALYPTUS  | 1          | 1           | 12.19 (L) x 2.44 (W)    | 29.74               | \$155,000                         |
| HUON        | 1          | 1           | 12.19 (L) x 3.48 (W)    | 42.42               | \$175,000                         |
| LILLY PILLY | 1          | 1           | 9.40 (L) x 3.48 (W)     | 32.71               | \$165,000                         |
| PANDANI     | 1          | 1           | 6.06 (L) x 3.48 (W)     | 21.10               | \$135,000                         |
| BLACKWOOD   | 1          | 1           | 6.01 (L) x 2.44 (W) * 2 | 29.54               | \$210,000                         |

## 2 Bedroom Designs

| Model            | Bedroom(s) | Bathroom(s) | Module Base (m)              | Area m <sup>2</sup> | Approx. Installed Price (ex. GST) |
|------------------|------------|-------------|------------------------------|---------------------|-----------------------------------|
| WATTLE           | 2          | 1           | 12.20 (L) x 3.40 (W)         | 41.50               | \$175,000                         |
| FRANGIPANI       | 2          | 1           | 12.19 (L) x 3.35 (W)         | 41.50               | \$175,000                         |
| LEATHERWOOD      | 2          | 2           | 14.20 (L) x 4.20 (W)         | 59.64               | \$270,000                         |
| LEATHERWOOD PLUS | 2          | 2           | 13.8 (L) x 4.0 (W) x 3.0 (W) | 69.90               | \$280,000                         |
| BLUE GUM 1       | 2          | 1           | 12.19 (L) x 2.44 (W) * 2     | 59.49               | \$260,000                         |
| BLUE GUM 2       | 2          | 2           | 12.19 (L) x 2.44 (W) * 2     | 59.49               | \$270,000                         |
| MYRTLE 1         | 2          | 2           | 12.19 (L) x 3.50 (W) * 2     | 85.33               | \$310,000                         |
| MYRTLE 2         | 2          | 2           | 12.19 (L) x 2.44 (W) * 2     | 85.33               | \$315,000                         |
| SNOW GUM 1       | 2          | 1           | 11.30 (L) x 3.50 (W) * 2     | 79.10               | \$295,000                         |
| SNOW GUM 2       | 2          | 2           | 11.30 (L) x 3.50 (W) * 2     | 79.10               | \$305,000                         |

## 3 Bedroom Designs

| Model   | Bedroom(s) | Bathroom(s) | Module Base (m)                                | Area m <sup>2</sup> | Approx. Installed Price (ex. GST) |
|---------|------------|-------------|--|---------------------|-----------------------------------|
| ACACIA  | 3          | 2           | 12.19 (L) x 3.48 (W) * 2                       | 84.84               | \$340,000                         |
| WARATAH | 3          | 2           | 12.19 (L) x 3.48 (W) & 6.06 (L) x 3.48 (W) * 2 | 84.60               | \$350,000                         |

## 4 Bedroom Design

| Model        | Bedroom(s) | Bathroom(s) | Module Base              | Area m <sup>2</sup> | Approx. Installed Price (ex. GST) |
|--------------|------------|-------------|--------------------------|---------------------|-----------------------------------|
| BOTTLE BRUSH | 4          | 2           | 12.19 (L) x 3.48 (W) * 3 | 127.26              | \$390,000                         |

## Prices Specifications

Knest provides transparent installed pricing for each of its modular home models prior to the contract being signed. The installed price is a turnkey price that includes the modular unit plus standard installation on a suitable site. All prices are approximate and assume a flat, easily accessible site with standard soil (class M) and proximity to within 50km of Hobart or 50km of Bell Bay.

Every project is quoted individually, so your final price may vary depending on your site's unique characteristics and any custom choices. Any additional requirements will be quoted separately.

Pricing from April 1<sup>st</sup> 2026, valid for orders placed before June 1<sup>st</sup> 2026.



# What's included in the install price?

## **Inclusions in the Standard Installation Price:**

- Site assessment and preparation of module placement
- Delivery of modular units to site (50km allowance from port location)
- Connection of essential services including storm water, sewer, electrical, water and NBN draw wire to existing lot connections within linear metres of the modular home
- Assembly and securing of modules to piers 600mm high, additional cost if higher
- Final checks to ensure the home is ready for handover

## **Not included in the Standard Installation Price:**

- Council fees, development applications or associated approvals
- Any new service connections, upgrades or extensions beyond the standard service connection allowances
- Crane lift and placement of modules onto prepared foundations
- Utility provider connection fees or account establishment charges, including any Tas Networks fees for power line protection.
- Landscaping, driveways, fencing or external works unless otherwise specified
- Customisations or design modifications beyond the standard floor plans
- Site specific drawings, energy reports, building and engineering designs





# Standard Module Inclusions

## **STRUCTURE**

- Engineered galvanised steel structural framing to internal and external walls
- Galvanised steel joists, bearers and corner posts
- Structural design compliant with NCC requirements Class 1a dwellings
- Modular homes designed and manufactured in a controlled factory environment for quality and durability

## **WINDOWS, DOORS & CLADDING**

- Aluminium framed, thermally broken double-glazed windows and sliding doors as per the plan
- Keyed locks to all external doors and awning windows
- External cladding: James Hardie cladding systems

## **INSULATION & ENERGY EFFICIENCY**

- High performance wall, ceiling and floor insulation system
- Ceiling insulation including sprayed polyurethane foam
- Minimum 6-star energy rating, with most designs typically achieving 7-star or greater depending on site orientation and configuration
- Thermally broken window frames included as standard to enhance thermal performance

## **INTERNAL FIT-OUT & FINISHES**

- 2400mm internal ceiling height
- Fire-rated Gyprock plasterboard to internal and external walls - Cement sheet (Villaboard) lining to wet areas
- Vinyl plank flooring to living areas and bedrooms
- Ceramic tiling to bathrooms and laundry
- Painted skirtings, architraves and door jambs
- Flush panel internal doors and architectural lever handles

## **JOINERY**

- Custom- built kitchen cabinetry as shown on the plan
- Blum brand hinges and quality drawers and runners
- Square-edged engineers stone benchtops to kitchen and laundry (silica free)
- Custom bathroom and laundry cabinetry with engineered stone benchtops (silica free) - Mirror shaving cabinets to bathrooms
- Built-in wardrobes fitted with shelving and hanging rails



## **KITCHEN & APPLIANCES**

- Kitchen sink as per the plans
- Standard appliance package including:
  - 60cm "Midea" Induction cooktop
  - 60cm "Midea" fan forced oven
  - 60cm "Midea" slide-out rangehood
- Provisional space for dishwasher included
- Provisional space for microwave alcove included

## **ELECTRICAL & LIGHTING**

- Internal and external switchboards and compliant wiring to Australian Standards
- Recessed LED downlights throughout
- Double power points throughout
- TV points to living area and main bedroom
- Data point to living area
- Hard-wired interconnected smoke alarms
- Bathroom exhaust fans and heat/light units
- External light fittings included
- Meter box supplied as standard

*Note: no heating is included*

## **PLUMBING**

- Complete internal plumbing system including sewer, storm water, and water connections within the module
- 160 litre electric hot water system
- One external water tap
- All required on-site wastewater and stormwater upgrades will be quoted separately

Knest reserves the right to vary these inclusions without notice. Please contact us to ensure you have the latest version.



# Additional Options

Your Knest home comes complete with high-quality standard inclusions, however we also offer a range of additional upgrades and options to tailor your home to suit your lifestyle, site conditions and personal preferences.

Standard floor plans can be customised or modified to suit client requirements. Customisation may incur additional design and engineering costs

## Roof & Exterior

- Pitched Roof – A classic, elevated profile that enhances airflow and creates a traditional look.
- Skillion Roof – A sleek, modern roofline designed for simplicity and contemporary appeal.
- Decking – Extend your living space outdoors with durable, low-maintenance deck options.
- Pergolas – Add shade and architectural character to your outdoor areas.
- Driveways – Practical and durable finishes to complete your site and improve access.

## Energy & Sustainability

- Solar System – Harness the sun with integrated solar panels for sustainable power generation.
- Battery System – Store energy for night use and improve your home's resilience off-grid.

## Comfort & Living

- Heating / Air Conditioning – Split systems or ducted options for year-round climate control.
- Panel Heaters – Compact, efficient heating tailored to smaller spaces or bedrooms.
- LED Strip Feature Lights – Add a modern design touch with stylish accent lighting.
- Security Screens – Increase safety and airflow with mesh screen options for doors and windows.
- - Flyscreens to all openable windows (fibreglass as standard)
- - Security screens or BAL-rated aluminium screens

## Kitchen Upgrades

- Dishwasher – Built-in convenience for easy everyday living.

All optional upgrades are quoted individually, as costs vary depending on your chosen design, site conditions, and specific requirements. During the design and approval stage, your Knest consultant will provide a transparent breakdown so you can see exactly how each option affects your total build price. This way, you only pay for the features you truly want, with no surprises.



Notes:



E: [sales@knest.com.au](mailto:sales@knest.com.au)  
W: [www.knest.com.au](http://www.knest.com.au)

Unit 3/14 Cessna Way,  
Cambridge, TAS 7170  
Australia